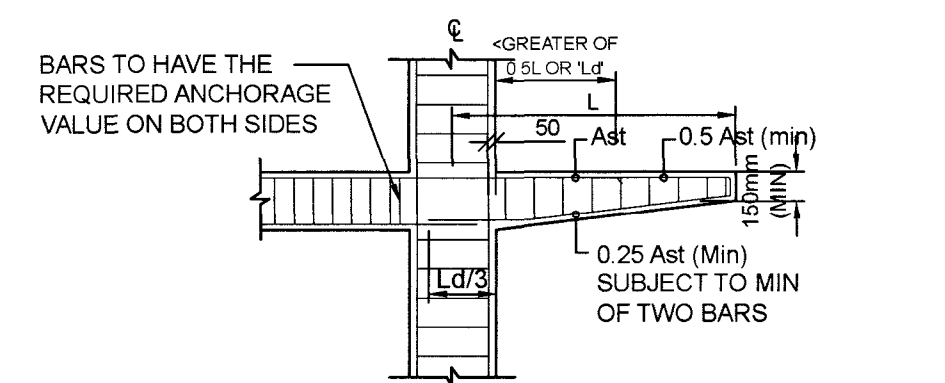
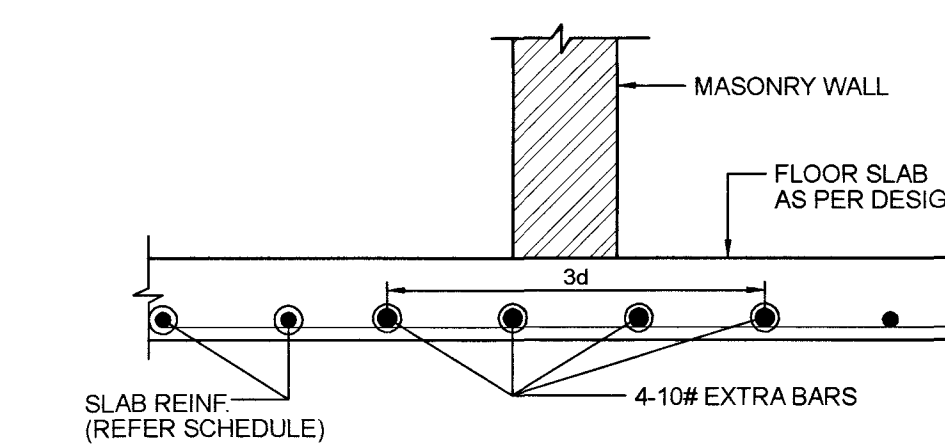


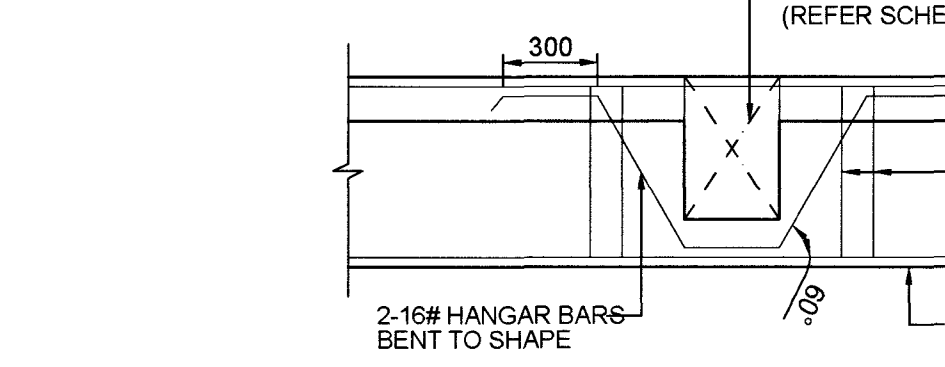
② JUNCTION DETAILS OF PRIMARY BEAM AND SECONDARY BEAM



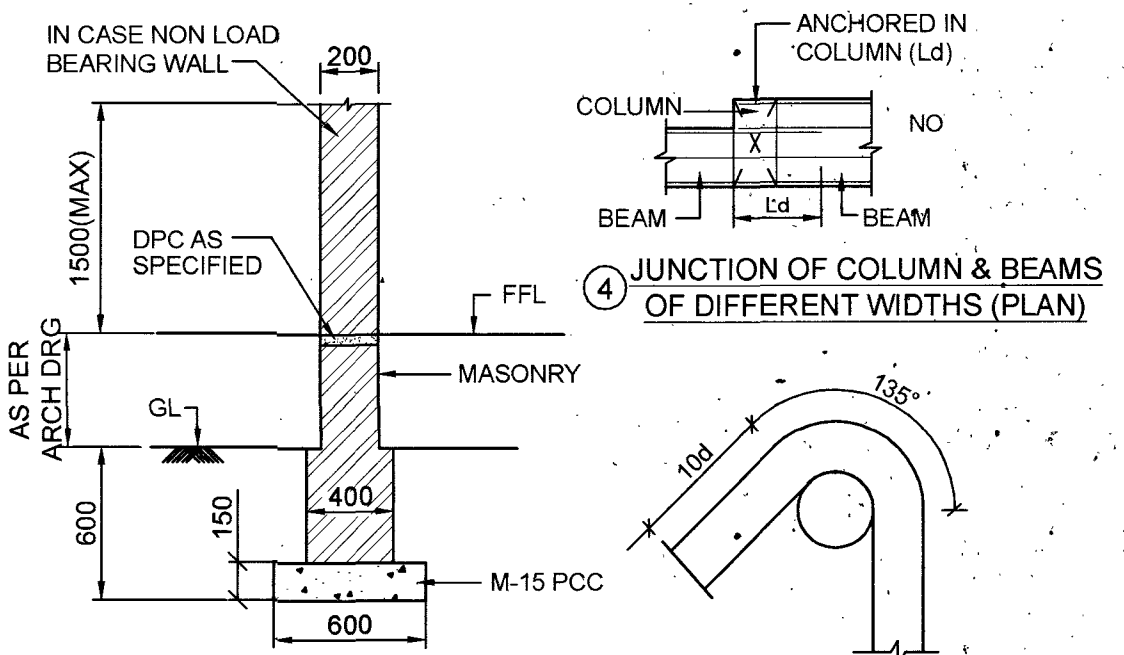
⑦ CANTILEVER BEAM PROJECTING FROM A BEAM OVER A COLUMN



⑪ TYPICAL DETAILS AT SUPPORT OF 100/115 TH WALL



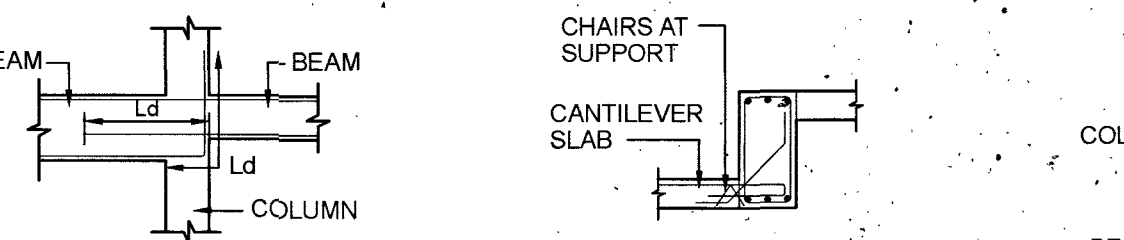
⑮ JUNCTION DETAILS OF SECONDARY BEAM ON PRIMARY BEAM



③ DETAIL OF DWARF WALL



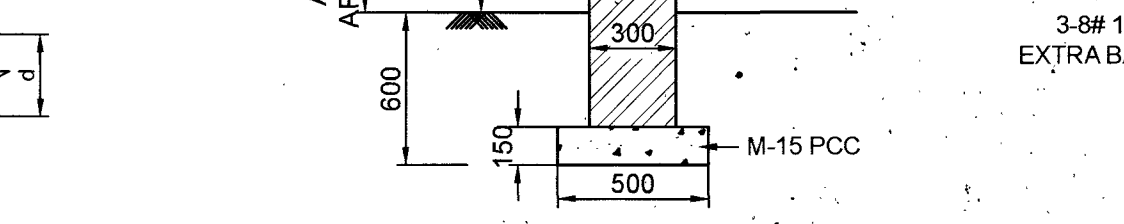
⑤ TYPICAL DETAILS OF BEAM STIRRUPS



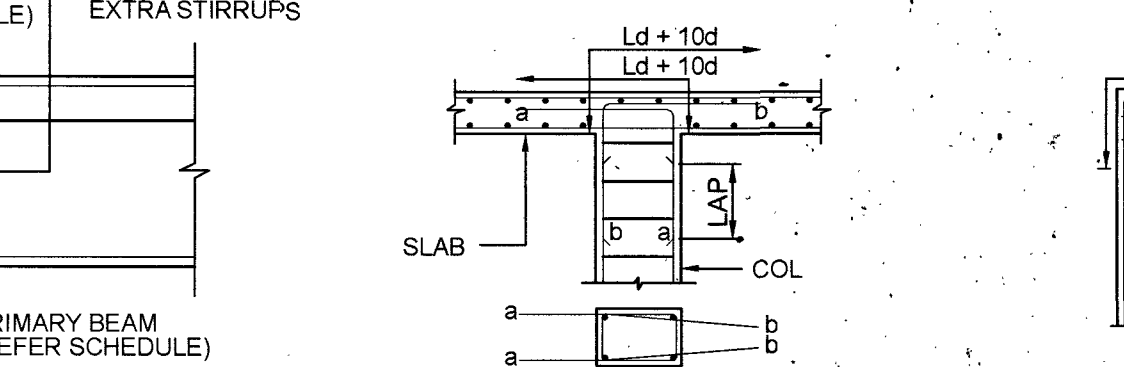
⑧ JUNCTION OF COLUMN & BEAMS OF DIFFERENT DEPTHS



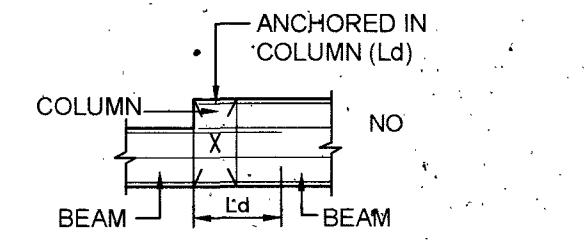
⑨ CANTILEVER SLABS AT THE BOTTOM OF BEAMS



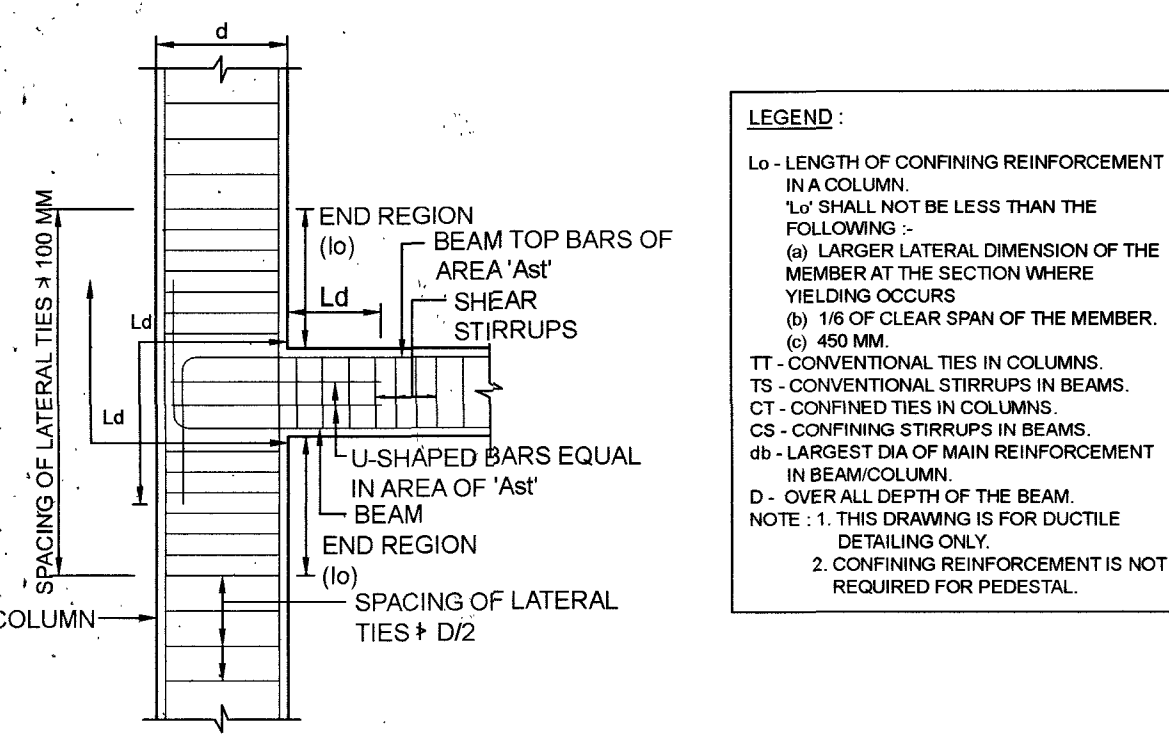
⑫ DETAIL OF TOE WALL



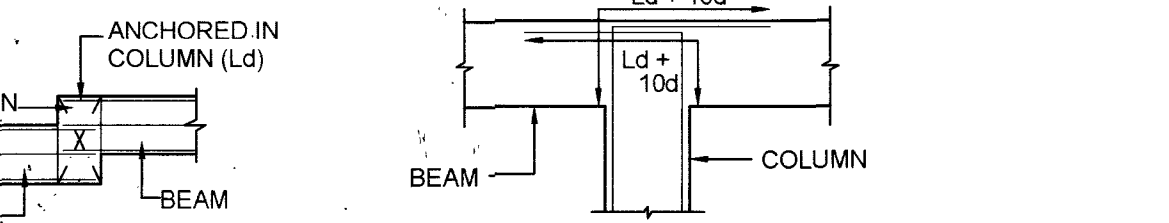
⑯ COL BARS TO BE BENT INTO SLAB



④ JUNCTION OF COLUMN & BEAMS OF DIFFERENT WIDTHS (PLAN)



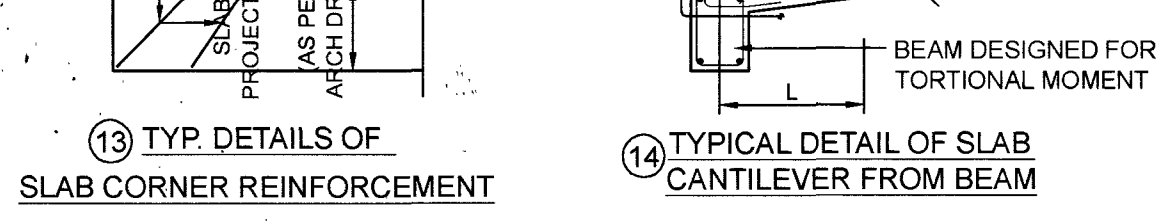
⑥ BEAM & COLUMN JOINT AT EXTERNAL COLUMNS



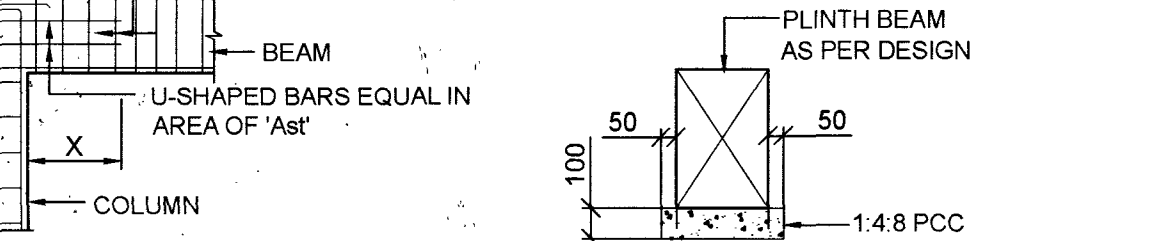
⑩ JUNCTION OF BEAMS FLUSHING IN DIFFERENT FACES OF COLUMN (PLAN)



⑪ COL BARS TO BE BENT INTO BEAM

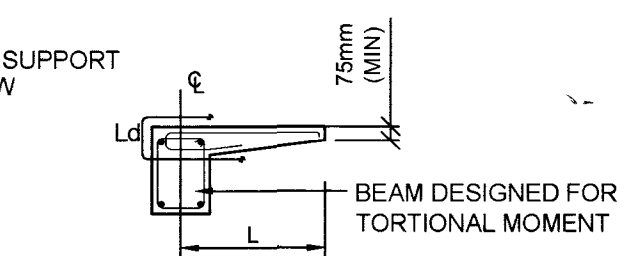


⑬ TYP. DETAILS OF SLAB CORNER REINFORCEMENT

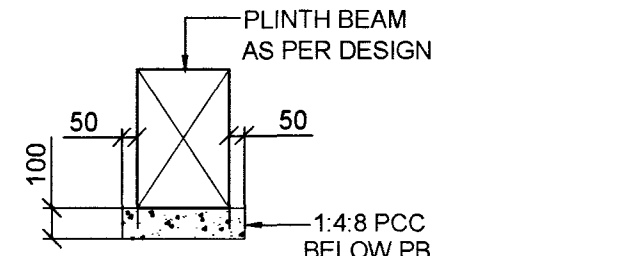


⑰ TYPICAL DETAILS OF JOINTS OF COL & BEAM

X = Ld FOR ZONE-II
X = Ld + 10d FOR ZONE-III, 1V & V



⑭ TYPICAL DETAIL OF SLAB CANTILEVER FROM BEAM



⑱ TYPICAL SECTION OF PLINTH BEAM

LEGEND :
Lo - LENGTH OF CONFINING REINFORCEMENT IN A COLUMN.
'Lo' SHALL NOT BE LESS THAN THE FOLLOWING :-
(a) LARGER LATERAL DIMENSION OF THE MEMBER AT THE SECTION WHERE YIELDING OCCURS
(b) 1/6 OF CLEAR SPAN OF THE MEMBER.
(c) 450 MM.
TT - CONVENTIONAL TIES IN COLUMNS.
TS - CONVENTIONAL STIRRUPS IN BEAMS.
CT - CONFINED TIES IN COLUMNS.
CS - CONFINING STIRRUPS IN BEAMS.
db - LARGEST DIA OF MAIN REINFORCEMENT IN BEAM/COLUMN.
D - OVER ALL DEPTH OF THE BEAM.
NOTE : 1. THIS DRAWING IS FOR DUCTILE DETAILING ONLY.
2. CONFINING REINFORCEMENT IS NOT REQUIRED FOR PEDESTAL.

NOTES
1. ALL DIMENSIONS AND LEVELS GIVEN ARE IN MILLIMETERS UNLESS OTHERWISE SPECIFIED
2. FIGURED DIMENSIONS ONLY SHALL BE FOLLOWED
3. BOB= BOTTOM OF BEAM
TOB= TOP OF BEAM

DATE	DESCRIPTION	SIGN

VETTED BY
ALL DETAILS HAVE BEEN THOROUGHLY CHECKED AND ARE IN COMPLIANCE TO STANDARDS, CODES, REGULATIONS IN RESPECT OF SAFETY, SOUNDNESS AND ECONOMY.

PROVN OF HANGAR AND ANNEXE BUILDING AT INS DEGA VISAKHAPATNAM

MISCELLANEOUS DETAILS-2

SHT NO.	S36	HELIOS ENGINEERING CONSULTANTS #38-34-66 FCI COLONY MARRIPALEM VISAKHAPATNAM - 530018
PRO NO.	ST2204	
SCALE	AS NOTED	
DRN BY.	KSS	
DATE.	28-02-2023	

DESIGNED BY 	CHECKED BY
DVT	SURYA

CHIEF ENGINEER (NAVY) VISAKHAPATNAM

REF.DRG.NO : CEVZ/2022/WD-2120(S) Sht.No.340

DESIGNS & DRAWINGS PREPARED UNDER CONSULTANCY FROM M/S HELIOS ENGINEERING CONSULTANTS AND VETTED BY ANDHRA UNIVERSITY

Keshi Raman
Lt Col
SO 1 (Design)
for Chief Engineer

Srinivas Nalla, IDSE
CE. (NF)
Director (Design)
for Chief Engineer